


NORTH CENTRAL
Catchment Management Authority



MURRAY-DARLING
BASIN
COMMISSION

**Murray-Darling Basin
Commission
MDBC
LIVING MURRAY PROJECT**



GOLBURN-MURRAY
WATER

Tyson Fehring
PROJECT MANAGER

**G-MW is the MDBC Construction
Authority within Victoria**



Presentation

- Project background & Overview
- Gunbower Forest
- Construction
- Questions



The Problem

- The River Murray is an integral part of Australia's landscape. Our prosperity, our environment, our communities and our future depend upon it. However, the health of the River Murray system has declined and this threatens our industries, communities and natural and cultural values.



The Response

- In response to evidence of this decline, the Murray-Darling Basin Ministerial Council established the Living Murray program in 2002. The program is funded by the New South Wales, Victorian, South Australian, ACT and Australian governments, and is one of the world's most significant river restoration projects.



The First Step

- Initial action to protect and improve the health of the River Murray started with the 'First Step' decision. This involves investing \$500 million in water recovery over five years from 2004–05 and spending \$150 million over eight years on environmental works and measures.



The Focus

- The focus of the First Step is on achieving environmental benefits for six icon sites along the river. The aim is to maintain the healthy aspects of these sites and begin to address the decline in other areas as part of a larger effort to establish a healthy working river.



Icon Sites

1. Barmah Millewa Forest
2. Gunbower Koondrook-Perricoota Forest
3. Hattah Lakes
4. Chowilla Floodplain (including Lindsay-Wallpolla)
5. Lower Lakes, Coorong and Murray Mouth
6. River Murray Channel



GOLDBURN-MURRAY WATER

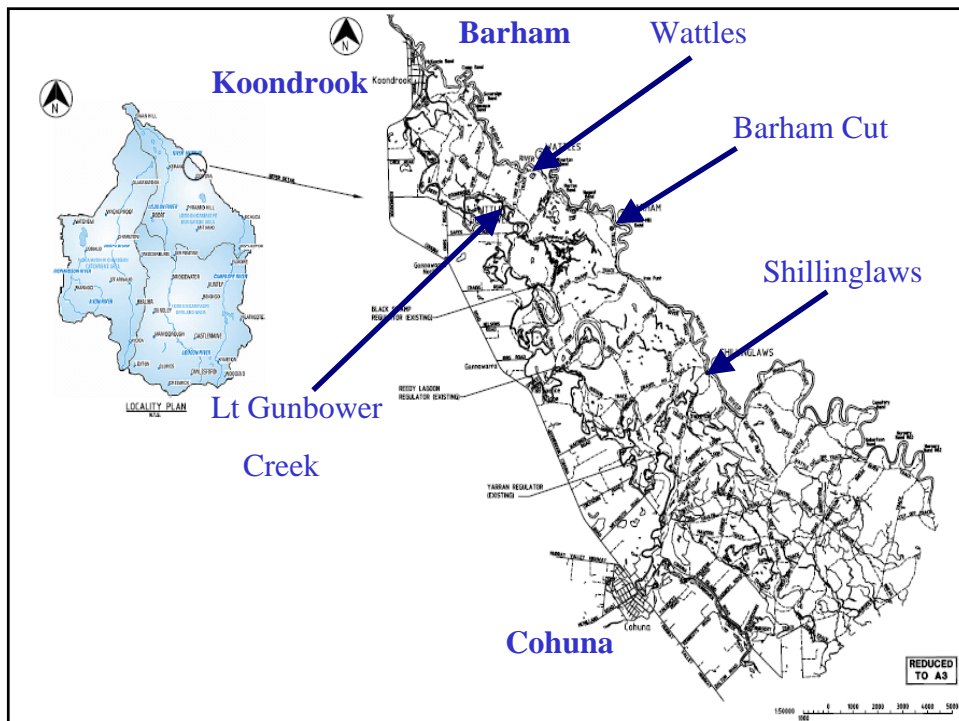
Interim objectives and outcomes for actions under the First Step

- Maintain and restore a mosaic of healthy floodplain communities
- 80% of permanent and semi-permanent wetlands in healthy condition
- 30% of River red gum forest in healthy condition
- Successful breeding of thousands of colonial waterbirds in at least three years in ten
- Healthy populations of resident native fish in wetlands



Gunbower Forest

- Little Gunbower Creek Offtake
- Barham Cut
- Shillinglaws
- Wattles Regulator

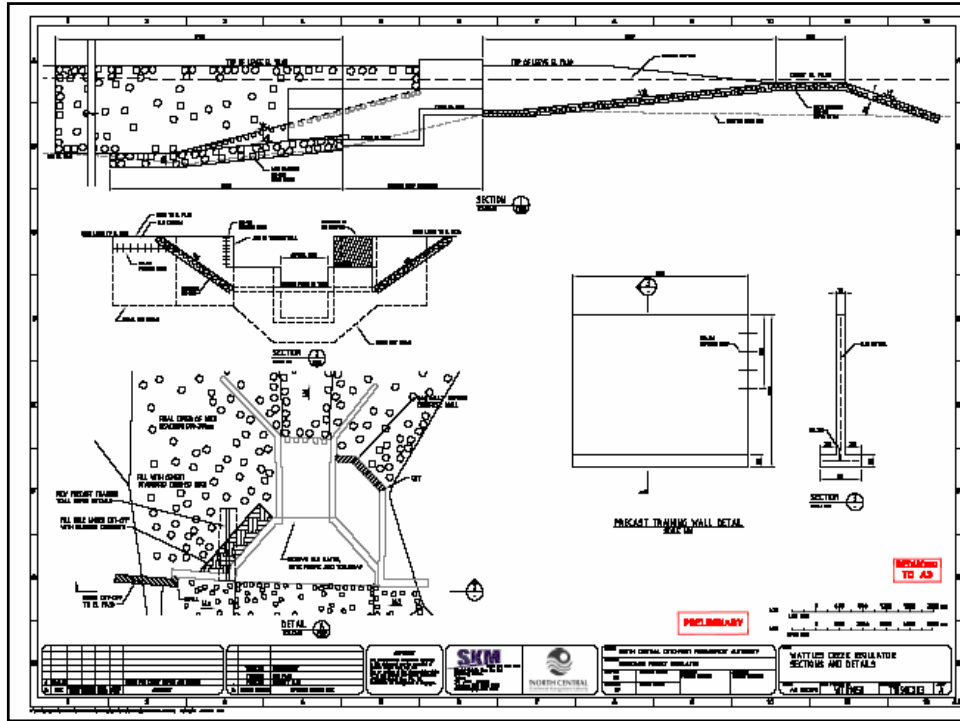




Upgrade Works

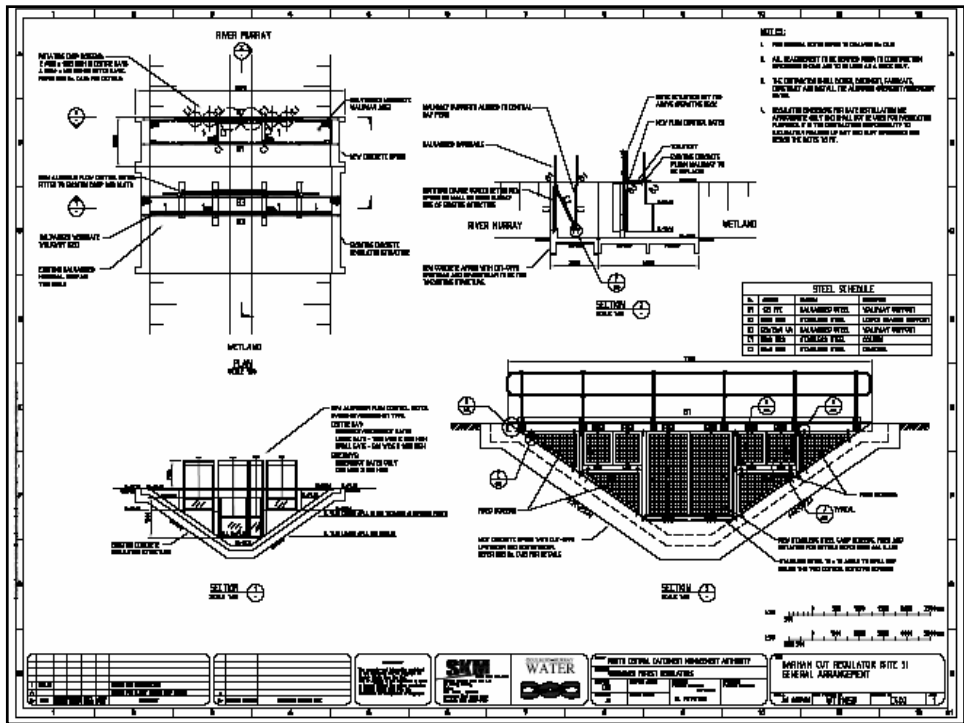
- **Wattles** – Remove Gate & Construct Fixed Crest Bank
- **Barham Cut** – Replace Gates, Install carp Screens & Flow Meter
- **Shillinglaws** – Replace Gates, Install Carp Screens, Log Boom & Flow Meter



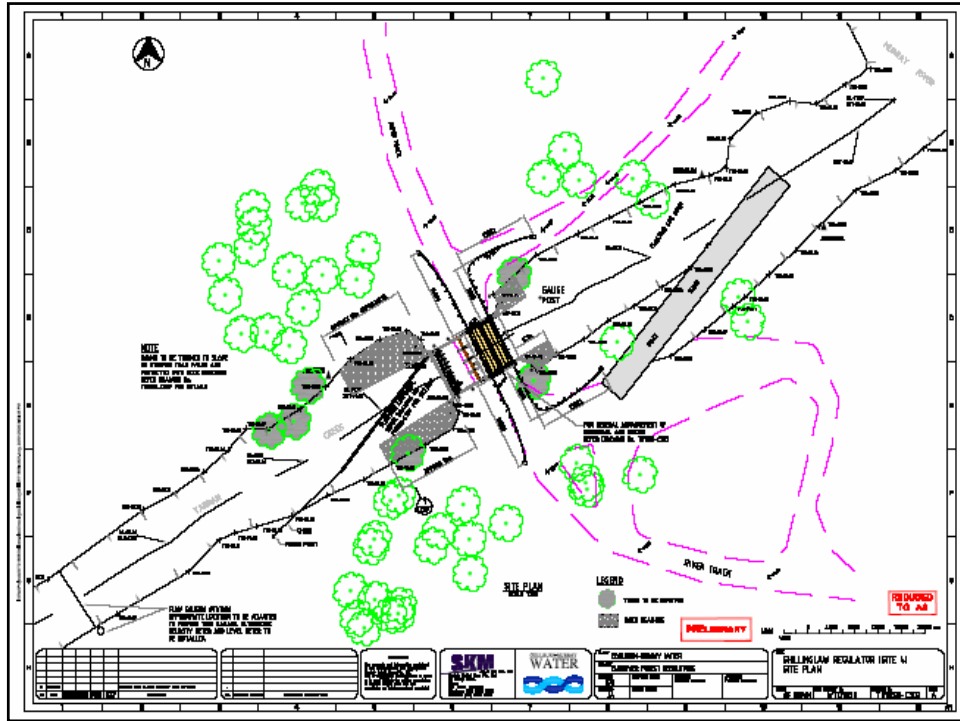




BARHAM CUT



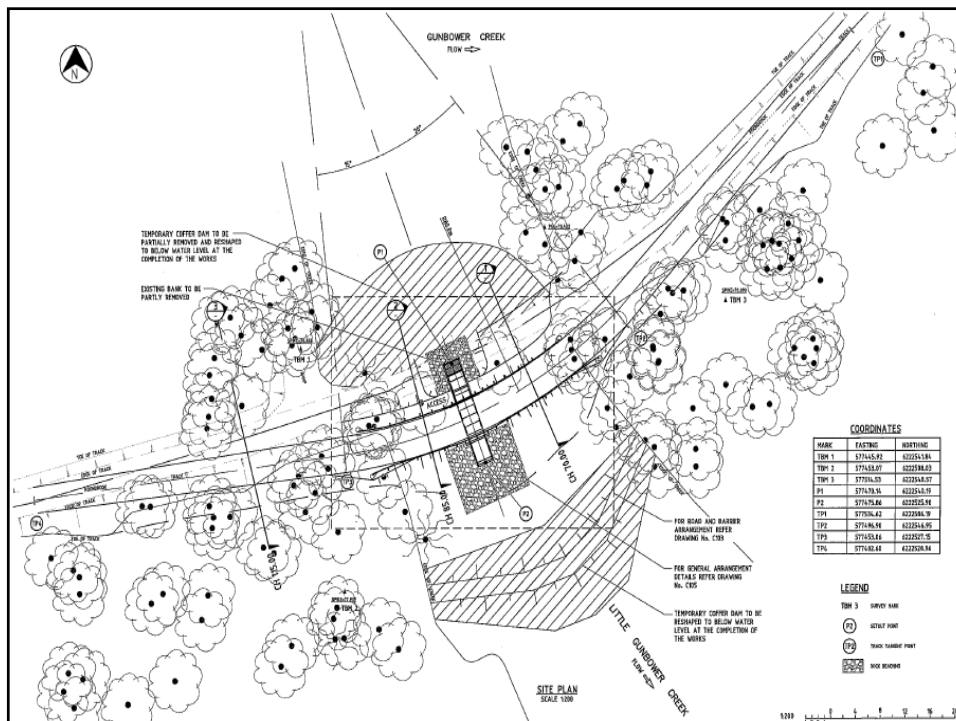






Little Gunbower Creek Regulator

- Estimated Cost \$800,000
- 350 ML/d flow into the Gunbower Forest
- Rubicon - Flume Gate
- G-MW Construction Services





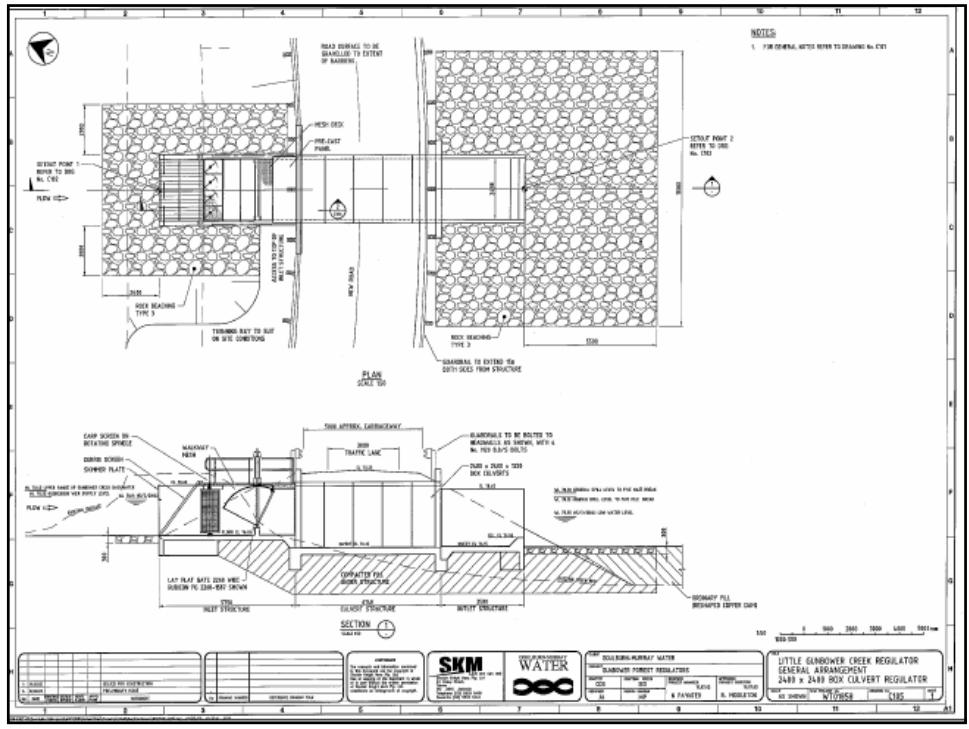
Site After Tree Removal





Site Layout







Construction



 **GOLBURN-MURRAY WATER**

Backfill & Track Re-alignment





GOLBURN-MURRAY WATER

Project Summary

- Estimated 40,000 m³ of Earth trucked to site.
- Peak Workforce – 12
- Total Project Estimated Cost \$1.41 M



Thank You

Questions?